

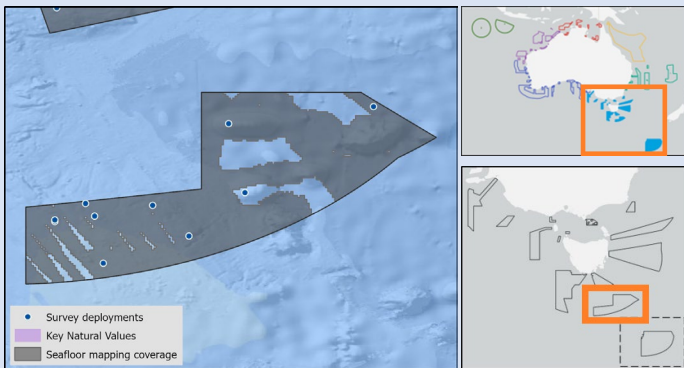
South Tasman Rise Marine Park state of knowledge



Australian Government
Parks Australia



Australian
Marine Parks



Interactive [Map](#) and [Report](#).

South Tasman Rise Park contains a cluster of distinctive seamounts characterised by flat tops that potentially encompass many shelf reef habitats. The seamount areas are highly productive with diverse coral assemblages, which have been the target of historical commercial fishing efforts for decades owing to their ability to support vast fish assemblages¹. The park covers representative areas of the Tasmania Province bioregion.

Depth - 804m – 5022m

77.7% of seafloor mapped, most at a medium resolution to support biodiversity surveys.

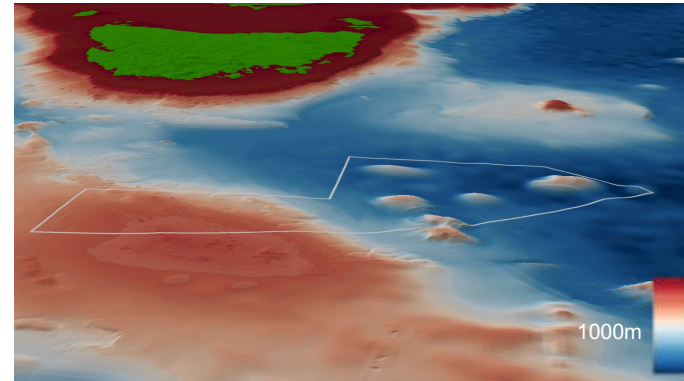
Further information:

1. Anderson & Clark. 2003. [Analysis of bycatch in the fishery for orange roughy, *Hoplostethus atlanticus*, on the South Tasman Rise](#)
2. Pethybridge et al. 2013. [The foraging ecology of an oceanic squid, *Todarodes filippovae*: The use of signature lipid profiling to monitor ecosystem change](#)
| State of Knowledge published Feb 2023 |

Overall knowledge status

South Tasman Rise Marine Park has a **low level of knowledge**.

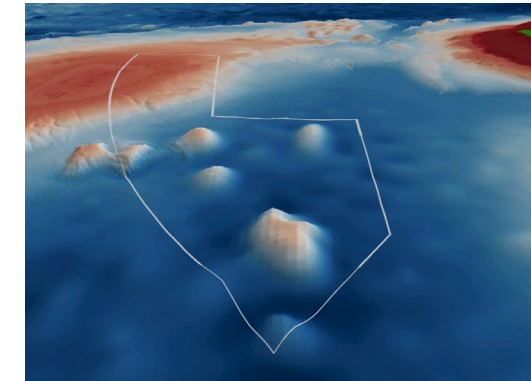
Medium resolution mapping covers much of the park. No targeted biological surveys have been undertaken in the park.



Source: Geoscience Australia

Seamounts

A cluster of seamounts situated within South Tasman Rise are inhabited by deep-sea coral communities, forming vast habitats that provide refuge and foraging grounds for crustaceans, squid and large fish assemblages^{1,2}.



Source: Geoscience Australia

Key knowledge gaps

- Fine scale multibeam mapping of identified key priority areas
- Characterise benthic communities and demersal fish communities on priority areas

Key activities

Commercial fishing (historic)

Key pressures

Resource extraction
Climate change

Fish communities

No targeted research sampling of any reef associated fishes within the park, however commercial fishing target Orange Roughy (*Hoplostethus atlanticus*) and bycatch from these fisheries has shown a number of Oreid species occur in high abundance. Antarctic Flying Squid (*Todarodes filippovae*) have also been caught as part of research within the park^{1,2}.

Coral communities

South Tasman Rise Marine Park seamount coral communities include scleractinians, golden corals, bamboo corals, black corals and soft corals¹.