



Australian Government

Parks Australia



Australian  
Marine Parks

# South-east Marine Parks Network

## Management Plan 2025

### Zoning and rules

#### About Australian Marine Parks in the South-east Network

Most of the marine parks in the South-east Network were established in 2007 to protect examples of the region's marine ecosystems and biodiversity. The Network is located in Commonwealth waters, between three nautical miles (about 5.5 km) and 200 nautical miles (about 370 km) offshore.

There are 14 marine parks off the coast of South Australia, Tasmania, and Victoria, and in the Southern Ocean, that make up the South-east Network. These parks cover 701,927 km<sup>2</sup>.

They protect examples of incredible habitats, such as deep and wide canyons, seamounts and the ancient land bridge between Tasmania and Victoria. Ecosystems of the Network feature unique and rare species, such as large black coral trees, oceanic golden kelp forests, deep-sea eels and Port Jackson shark aggregations and support threatened species, including the pygmy blue whale, shy and wandering albatross, and the southern elephant seal.

For over 60,000 years, the Sea Country of the south-east marine region – of which the South-east Network is only a part – has been cared for and sustainably managed by Traditional Owners. Their traditional ecological knowledge and cultural environmental practices have been essential in maintaining the health of Sea Country over millennia. The Traditional Owners of the region have a profound and enduring connection to this Sea Country. Their stewardship remains vital to the preservation and management of these marine environments today and into the future.

These marine parks include zones that can be used for commercial and recreational fishing, tourism, mining (only in existing titles), and shipping activities, which contribute to economic growth, employment and social wellbeing both nationally and in coastal towns and communities.

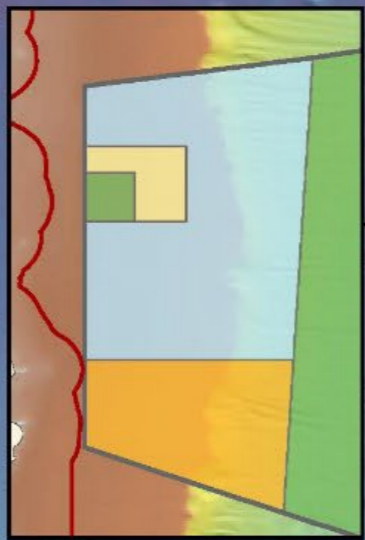
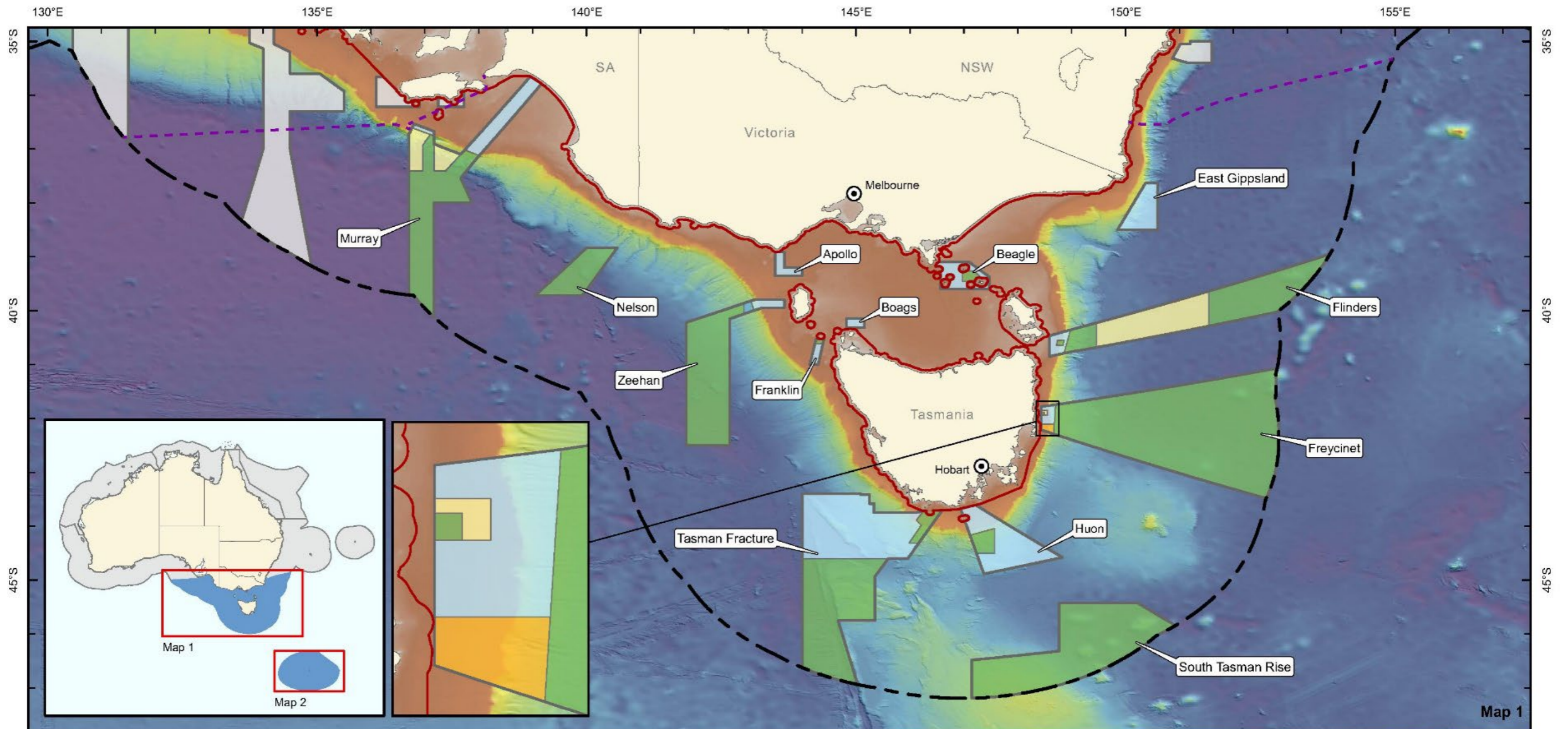
*The zoning and rules for activities in marine parks help to achieve a positive outcome for the environment and the Australian community by protecting important marine habitats, features and species, while supporting use and enjoyment of these special places.*

If you plan to enter or undertake activities in an Australian Marine Park, it is important that you are familiar with its management zones and rules. The map and table below provide a summary of the zones and the rules that apply in each zoning type. You can find detailed information about these zones and the rules in the management plans, available on our website. This factsheet should be read in conjunction with the South-east Marine Parks Network Management Plan 2025.

#### Managing activities in the South-east Network

The management plan describes the management of the marine parks in the South-east Network until 2035. It sets out which activities are allowed (without authorisation), allowable (with authorisation), or not allowed. For activities that require an authorisation, the plan also provides information on the assessment and decision-making processes, the types of authorisations available and how certain activities need to be undertaken.

The management plan does not impact on non-commercial traditional use or enjoyment of sea country by First Nations or Tasmanian Aboriginal people, including non-commercial hunting, food gathering and ceremonial and cultural practices.



### South-east Marine Parks Network

#### Zoning

- Sanctuary Zone (IUCN Ia)
- National Park Zone (IUCN II)
- Recreational Use Zone (IUCN IV)
- Habitat Protection Zone (Macquarie) (IUCN IV)
- Habitat Protection Zone (IUCN IV)
- Multiple Use Zone (IUCN VI)
- Special Purpose Zone (IUCN VI)

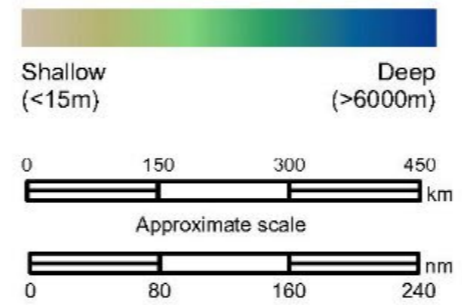
#### Marine protected areas

- South-west network marine parks or Temperate East network marine parks

#### Maritime boundaries

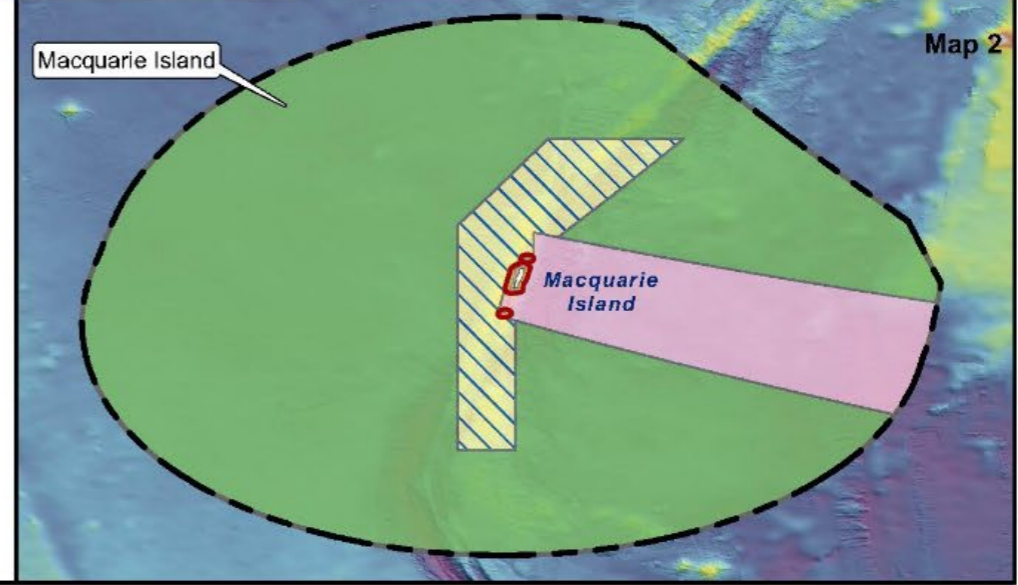
- Limit of coastal waters
- Limit of Australian exclusive economic zone (200nm)
- Marine region boundary

#### Ocean depth



Projection: Geographics  
Datum: GDA94 (effectively WGS84)

© Commonwealth of Australia, 2025



**Overview of rules for activities (refer to plan for full details)**

ACTIVITY		Multiple Use Zone (VI)	Special Purpose Zone (VI)	Habitat Protection Zone (IUCN IV)	Habitat Protection Zone (Macquarie Island) (IUCN IV)	Recreational Use Zone (IUCN IV)	National Park Zone (IUCN II)	Sanctuary Zone (IUCN Ia)
GENERAL USE, ACCESS AND WASTE MANAGEMENT	Vessel transiting	✓	✓	✓	✓	✓	✓	x
	Anchoring	✓	✓	x <sup>C</sup>	x <sup>C</sup>	x <sup>C</sup>	x <sup>C</sup>	x
	Ballast water discharge and exchange	✓	✓	✓	✓	✓	✓	x
	Disposal of waste from normal operations of vessels (MARPOL)	✓	✓	✓	✓	✓	✓	x
	Disposal of domestic and industrial waste	A	A	x	x	x	x	x
	Non-commercial remote piloted aircraft, drones etc.	✓	✓	✓	✓	✓	✓	x
TRADITIONAL USE BY FIRST NATIONS PEOPLE	Non-commercial hunting/food gathering, ceremonial and cultural use	✓	✓	✓	✓	✓	✓	✓
COMMERCIAL FISHING	Danish seine	x	x	x	x	x	x	x
	Dropline	A	x	x	x	x	x	x
	Hand collection (including hookah, scuba, snorkel)	A	x	A	x	x	x	x
	Hand net	A	x	A	x	x	x	x
	Longline (demersal, auto-longline)	A	x	x	A	x	x	x
	Longline (pelagic)	A	x	A	x	x	x	x
	Minor line (hand line, rod & reel, trolling, squid jig, poling)	A	x	A	x	x	x	x
	Net (demersal)	A	x	x	x	x	x	x
	Net (pelagic)	x	x	x	x	x	x	x
	Purse seine	A	x	A	x	x	x	x
	Scallop dredging	x	x	x	x	x	x	x
	Trap, pot	A	x	x	A	x	x	x
	Trawl (demersal)	x	x	x	x	x	x	x
	Trawl (midwater)	A	x	A	x	x	x	x
Trotline	A	x	x	x	x	x	x	
COMMERCIAL AQUACULTURE	Intensive aquaculture	x	x	x	x	x	x	x
	Other forms of aquaculture e.g. bivalves, algae etc.	A	x	A	x	x	x	x
COMMERCIAL MEDIA	Media	A	A	A	A	A	A	A
	News-of-the-day reporting	✓	✓	✓	✓	✓	✓	✓
COMMERCIAL TOURISM	Non-fishing related tourism (e.g. nature watching)	A	A	A	A	A	A	x
	Charter fishing tours	A	x	A	A	A	x	x
	Commercial aviation tours (up to 3000m above sea level)	A	A	A	A	A	A	A
RECREATIONAL USE	Recreational fishing (including spear-fishing)	✓	x	✓	✓	✓	x	x
	Recreational use (non-fishing, nature watching boating etc.)	✓	✓	✓	✓	✓	✓	x
OFFSHORE WIND	Offshore wind energy operations	x	x	x	x	x	x	x
MINING	Petroleum exploration and production	x <sup>P</sup>	x <sup>P</sup>	x	x	x	x	x
	Mineral seabed mining	x	x	x	x	x	x	x
	Construction and operation of pipelines	A <sup>B</sup>	A <sup>B</sup>	A <sup>B</sup>	A <sup>B</sup>	A <sup>B</sup>	A <sup>B</sup>	x
CARBON CAPTURE & STORAGE	Permanent storage of carbon dioxide in the seabed	x	x	x	x	x	x	x
	Construction and operation of pipelines	A <sup>B</sup>	A <sup>B</sup>	A <sup>B</sup>	A <sup>B</sup>	A <sup>B</sup>	A <sup>B</sup>	x
	Geological storage surveys	x	x	x	x	x	x	x
SPACE ACTIVITIES	Disposal of large space debris	A	A	x	x	x	x	x
	Disposal of small, particulate matter	A	A	A	A	A	A	x
STRUCTURES AND WORKS	Excavation, erection/maintenance of structures*, works	A	A	A	A	A	A	x <sup>S</sup>
	Dredging and disposal of dredged material	A	A	x	x	x	x	x
	Artificial reefs	A	A	A	A	A	x <sup>E</sup>	x
	Fish aggregating devices	A	x	x	A	A	x	x
RESEARCH AND MONITORING	Research	A	A	A	A	A	A	A
NATIONAL SECURITY AND EMERGENCY RESPONSE	National security and emergency response	✓	✓	✓	✓	✓	✓	✓

✓ Activity is allowed in accordance with the prescriptions of the South-east Marine Parks Network Management Plan.

x Activity is not allowed.

A Authorisation required. Activity is allowable, subject to assessment.

B Activity is allowable, subject to assessment. May only be authorised if the Director of National Parks is satisfied that alternative routes are not feasible of practicable

\* Structures may include, but are not limited to, moorings, submarine cables and electricity transmission cables.

C Anchoring is not allowed except in accordance with an authorisation for an activity or in anchoring areas determined under r. 12.56 of the EPBC Regulations.

E Activity is allowable only for the protection, conservation or restoration of habitats.

S Activity is allowable only for human safety, aids to navigation or compliance purposes.

P Activity is allowable only in Zeehan Marine Park, in areas where a petroleum title was granted prior to the commencement of this management plan

**Note:** - Fishing gear must be kept stowed and secured at all times during transit through, or while stopping and anchoring in a zone in which fishing activities are not authorised.  
- Disposal of waste from normal operations of vessels must comply with MARPOL requirements.

**Further Information**

If you have questions about the rules for activities, the South-east Marine Parks Network Management Plan or Australian Marine Parks, please visit the Australian Marine Parks website ([www.australianmarineparks.gov.au](http://www.australianmarineparks.gov.au)), or send an email to [marineparks@dcceew.gov.au](mailto:marineparks@dcceew.gov.au)